

**THE  
START LIVING  
SERIES**

# THE ASHFORD

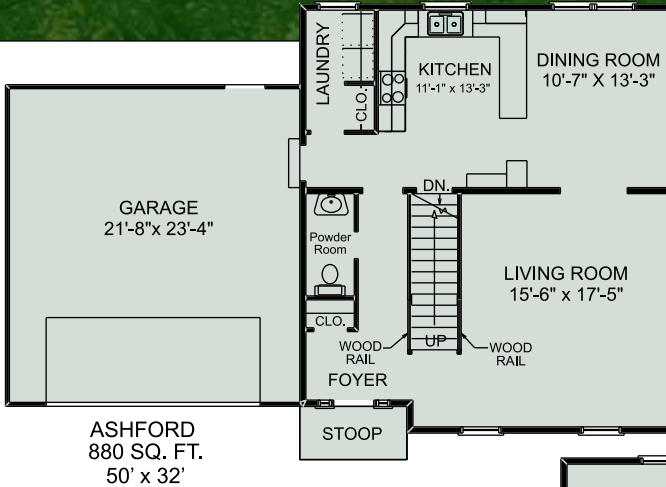
3 Bedrooms ■ 2 ½ Baths ■ 2-Story

## 2-STORY • ASHFORD

1760 Sq Ft Total  
1st Floor 880 Sq Ft  
2nd Floor 880 Sq Ft  
Garage 528 Sq Ft

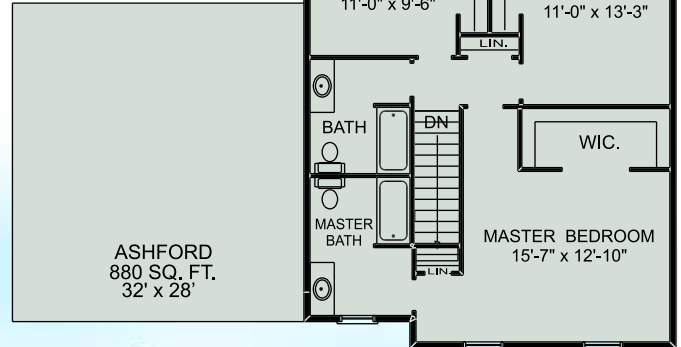
- 3 Bedrooms
- 2 ½ Baths
- 4' x 8' Front Porch
- 880 Sq. Ft.  
Unfinished Basement Area
- 2" x 6" Exterior Walls

*Shown with optional gable entry garage*



ASHFORD  
880 SQ. FT.  
50' x 32'

Copyright © 2006 Bastian Homes



ASHFORD  
880 SQ. FT.  
32' x 28'



Shown with Optional Front

