

**THE
START LIVING
SERIES**

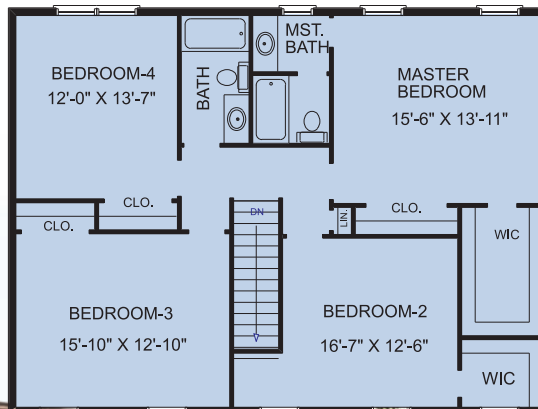
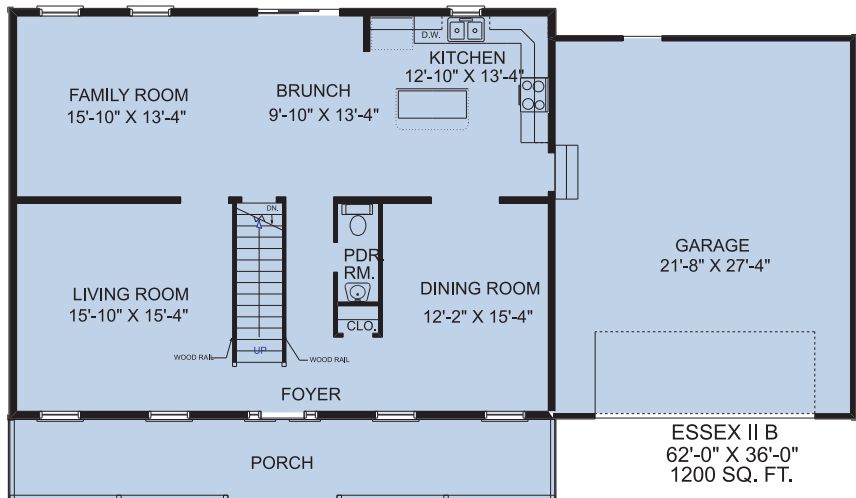
THE ESSEX II B

4 Bedrooms ■ 2 ½ Baths ■ 2-Story

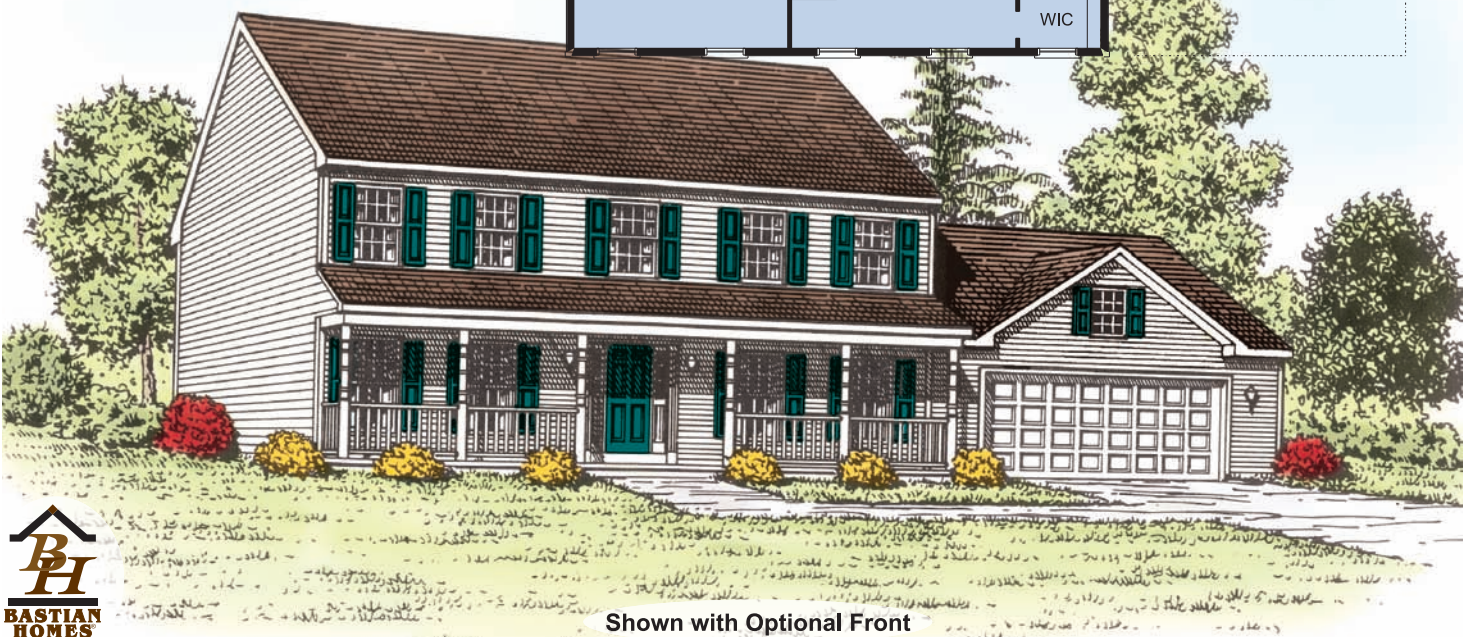
2-STORY • ESSEX II B

2400 Sq. Ft. Total
1st Floor 1200 Sq Ft
2nd Floor 1200 Sq Ft
2-Car Garage 616 Sq Ft

- 4 Bedrooms
- 2 ½ Baths
- 6' x 40' Front Porch
- L-shaped kitchen w/Island
- Unfinished Basement 1200 Sq. Ft.
- 2" x 6" Exterior Walls



Copyright © 2006 Bastian Homes



Shown with Optional Front

Floor plans, standard features, dimensions or any other information in this brochure is subject to change at the sole discretion of Bastian Homes