

**THE  
START LIVING  
SERIES**

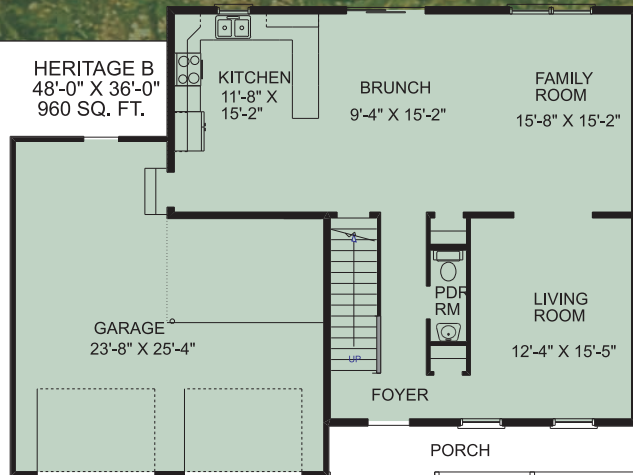
# THE HERITAGE B

4 Bedrooms ■ 2 ½ Baths ■ 2-Story

## 2-STORY • HERITAGE B

2016 Sq. Ft. Total  
1st Floor 960 Sq Ft  
2nd Floor 1056 Sq Ft  
2-Car Garage 550 Sq Ft

- 4 Bedrooms
- 2 ½ Baths
- 4' x 24' Front Porch
- Unfinished Basement 960 Sq. Ft.
- 2" x 6" Exterior Walls



Copyright © 2004 Bastian Homes

