

**THE
START LIVING
SERIES**

THE HERITAGE B

4 Bedrooms ■ 2 ½ Baths ■ 2-Story

2-STORY • HERITAGE B

With The Optional Front

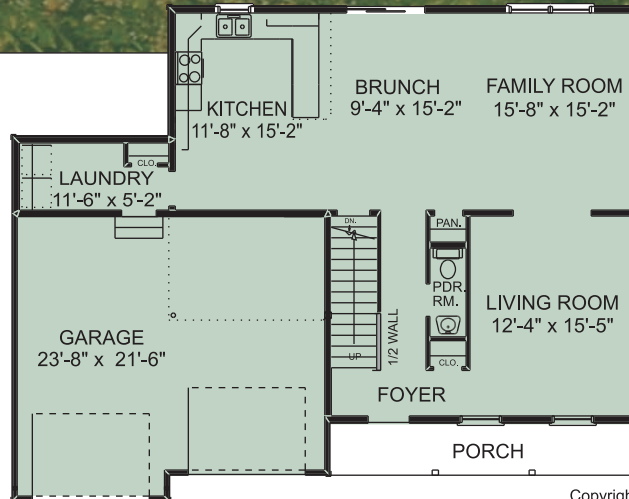
2016 Sq. Ft. Total

1st Floor 1032 Sq Ft

2nd Floor 1056 Sq Ft

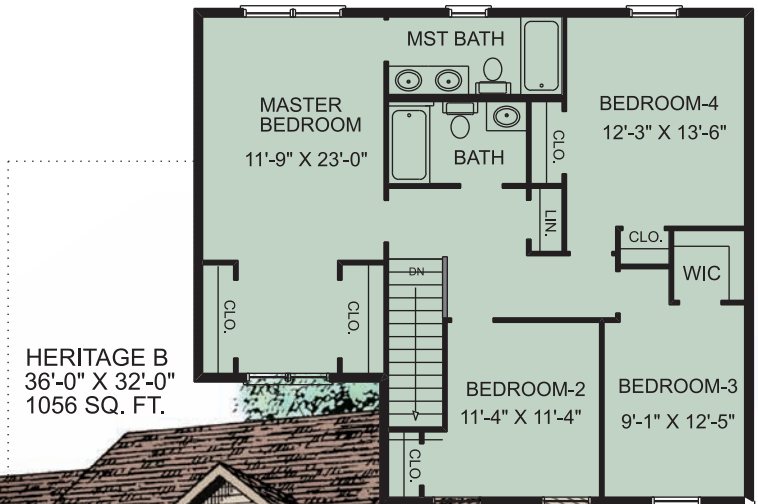
2-Car Garage 550 Sq Ft

- 4 Bedrooms
- 2 ½ Baths
- 4' x 24' Front Porch
- Unfinished Basement 960 Sq. Ft.
- 2" x 6" Exterior Walls

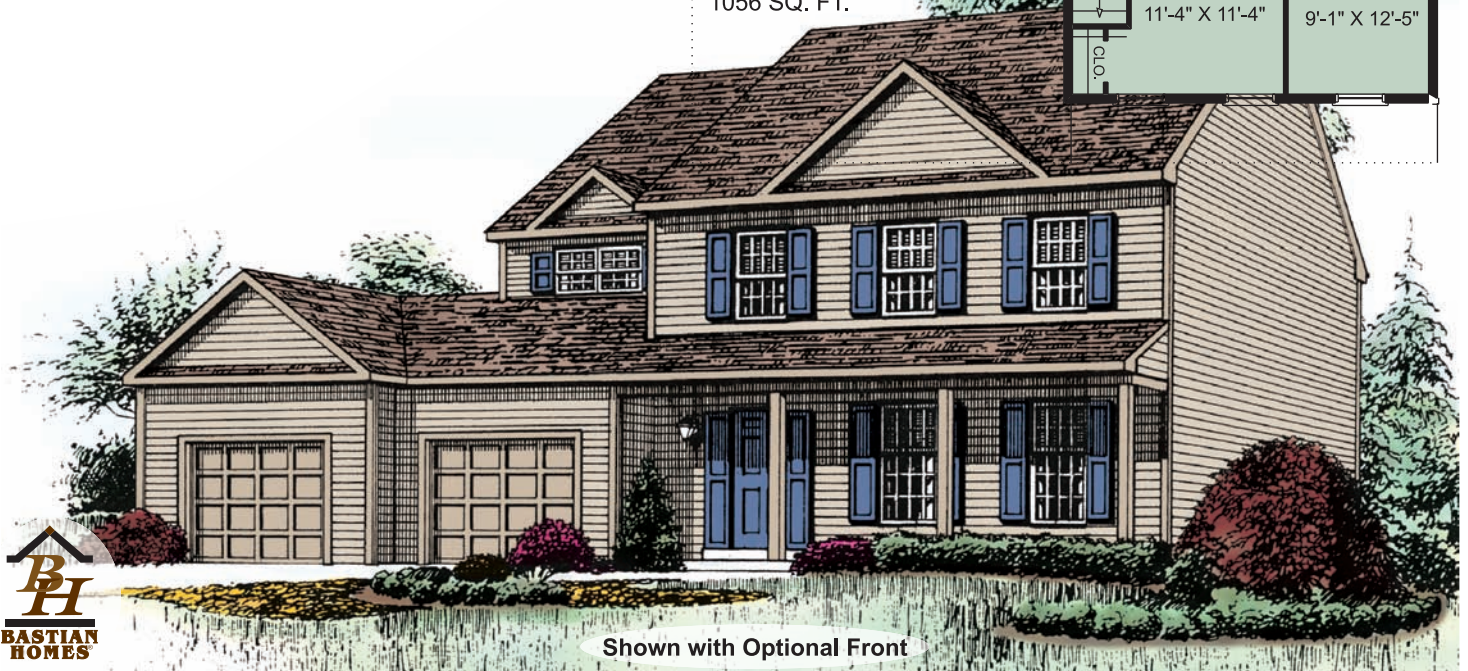


HERITAGE B
OPT FRONT
48'-0" x 38'-0"
1032 SQ. FT.

Copyright © 2007 Bastian Homes



HERITAGE B
36'-0" X 32'-0"
1056 SQ. FT.



Shown with Optional Front

