

**THE
START LIVING
SERIES**

THE HOMESTEAD

3 Bedrooms ■ 2 1/2 Baths ■ 2-Story

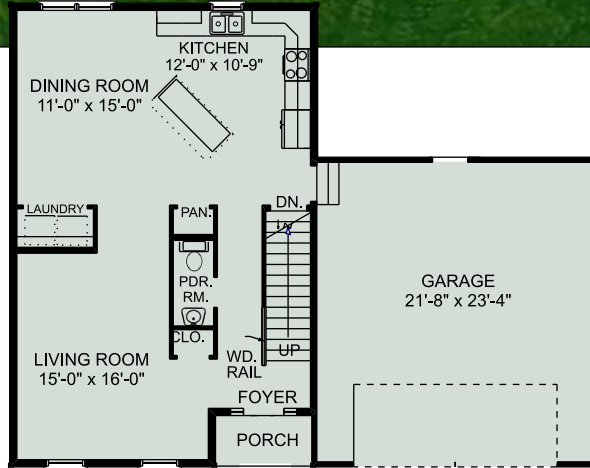
Copyright © 2006 Bastian Homes

2-STORY • HOMESTEAD

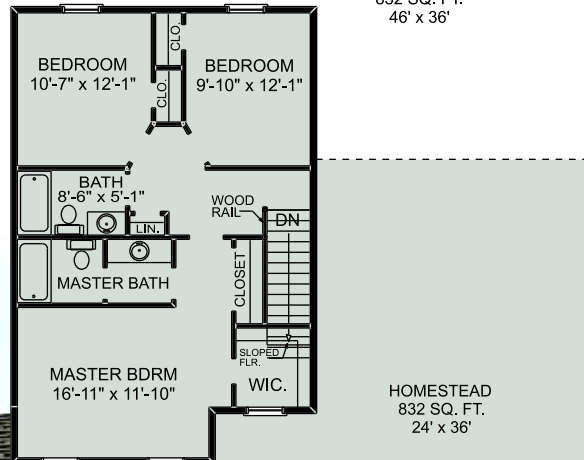
1664 Sq Ft Total
1st Floor 832 Sq Ft
2nd Floor 832 Sq Ft
2-Garage 528 Sq Ft

- 3 Bedrooms
- 2 ½ Baths
- 1st Floor Laundry
- 4' x 8' Front Portico
- 832 Sq Ft Additional Unfinished Basement Area
- 2" x 6" Exterior Walls

Shown with optional entry garage



HOMESTEAD
832 SQ. FT.
46' x 36'



HOMESTEAD
832 SQ. FT.
24' x 36'



Shown with Optional Front

