

**THE
START LIVING
SERIES**

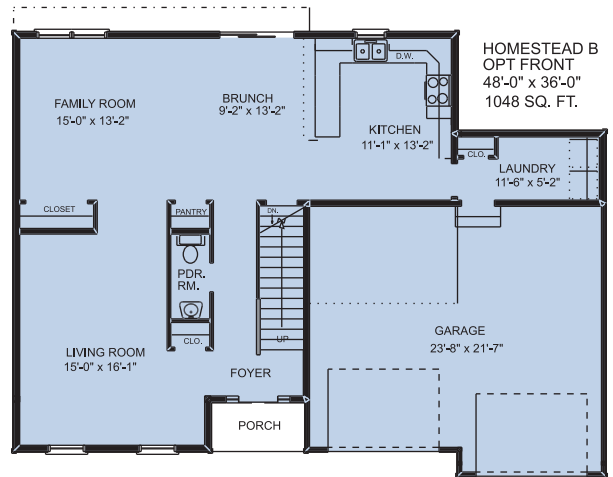
THE HOMESTEAD B

4 Bedrooms ■ 2 ½ Baths ■ 2-Story

2-STORY • HOMESTEAD B

2048 Sq. Ft. Total
1st Floor 1048 Sq Ft
2nd Floor 1096 Sq Ft
2-Car Garage 550 Sq Ft

- 4 Bedrooms
- 2 ½ Baths
- 1st Floor Laundry
- 4' x 8' Front Porch
- Unfinished Basement 960 Sq. Ft.
- 2" x 6" Exterior Walls



Copyright © 2007 Bastian Homes

