

BASTIAN HOMES

The Masterpiece Series



THE JONATHAN WENTWORTH

The grandeur of old is brought to life in a reproduction home of incredible charm.

The Jonathan Wentworth house bends all the rules of modern housing and delivers a visual beauty not seen in home building for nearly a hundred years. The genial lines that make up the facade and all the other elevations will sweep visitors off their feet. It'll be love at first glance, without a doubt, for everyone who happens upon it. From the sweeping porch to the spacious floor plan this home is the epitome of grand style.



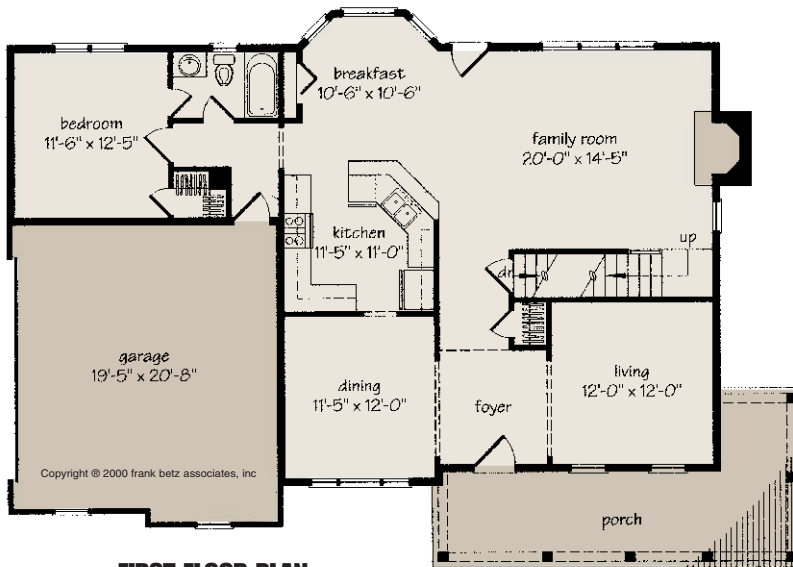
BASTIAN HOMES



1st Floor	1289 sq.ft.
2nd Floor	1069 sq.ft.
Total	2358 sq.ft.
Garage	400 sq.ft.
Opt. Bonus Rm.	168 sq.ft.

Overall Dimensions
54'-4" x 40'-1"

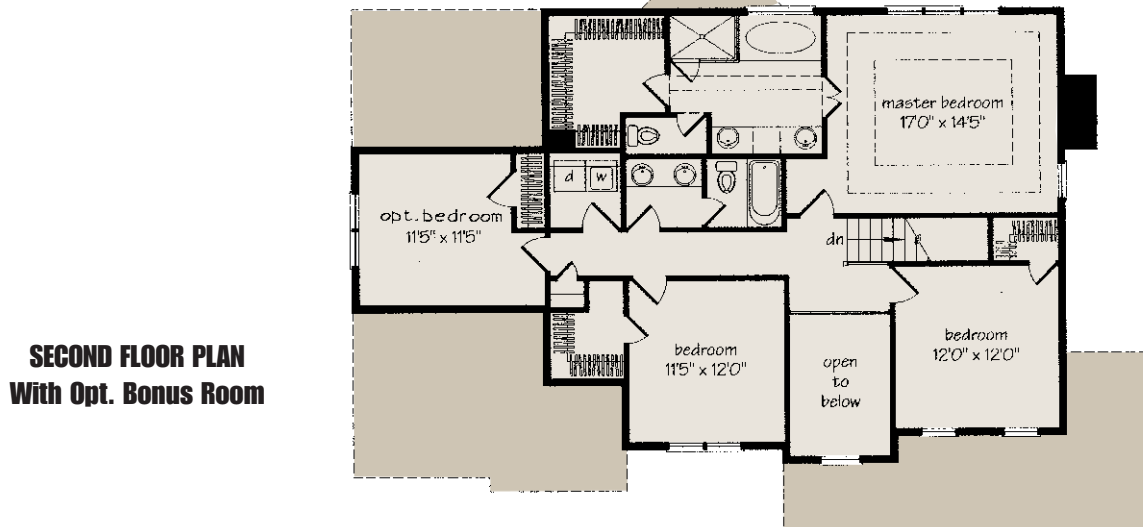
THE JONATHAN WENTWORTH



FIRST FLOOR PLAN

**The Jonathan Wentworth
Special Features:**

- 4 Bedrooms
- 3 Baths
- 2nd Floor Laundry
- Large Master Bath
- Brick Front
- 1st Floor Bedroom/study
- Wrap Around Porch
- Tray Ceiling in Master Bedroom
- Unfinished Basement Area 945 Sq. Ft.
- Vinyl Siding Exterior with Brick Front
- 2" x 4" Exterior Walls



**SECOND FLOOR PLAN
With Opt. Bonus Room**

Floor plans, standard features, dimensions or any other information in this brochure is subject to change at the sole discretion of Bastian Homes.

The Masterpiece Series