

The Masterpiece Series



THE MARTHA TRENT II

Like the original Martha Trent and its sister the Martha Trent III, this home is all about living on a larger-than-life scale. Complete with a wonderful kitchen, family room and study on the first floor, the Martha Trent II has four large bedrooms on the second floor for those with growing families or for those who just want to spread out in comfort. As with all of the models in the Masterpiece Series, this home fits into every neighborhood yet stands apart because of its traditional details and its fascinating historical appeal.



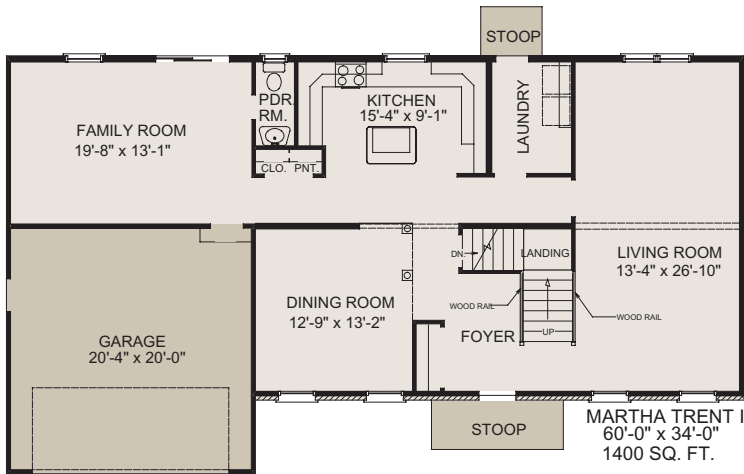
BASTIAN HOMES



1st Floor	1400 sq.ft.
2nd Floor	1120 sq.ft.
Total	2520 sq.ft.
2-Car Garage	400 sq.ft.

Overall Dimensions
60'-0" x 34'-0"

THE MARTHA TRENT II



FIRST FLOOR PLAN

The Martha Trent II Special Features:

- 4 Bedrooms
- 2 1/2 Baths
- Unfinished Basement Area 1120 Sq. Ft.
- Vinyl Siding with Brick Front
- Front Portico 10' x 4' w/Gable Roof
- 1st Floor Laundry
- 2" x 4" Exterior Walls



SECOND FLOOR PLAN



Floor plans, standard features, dimensions or any other information in this brochure is subject to change at the sole discretion of Bastian Homes.