

BASTIAN HOMES

The Masterpiece Series



THE REBECCA FRANKLIN

Close your eyes and imagine the old south as it once was. The Rebecca Franklin has a direct connection with the past. Magnificent in every detail, this is one of the great reproduction homes available today. A quick tour of the interior will easily convince purchasers that they are indeed on the right path. Speaking of paths: the

one that leads up to the front door of this

updated adaptation will be filled with ooh's and ahh's as the home's true beauty is quick to appear. Think about the heritage that once was, and in your vision you will definitely see a Rebecca Franklin house in the landscape.

Make it a part of your history as well.



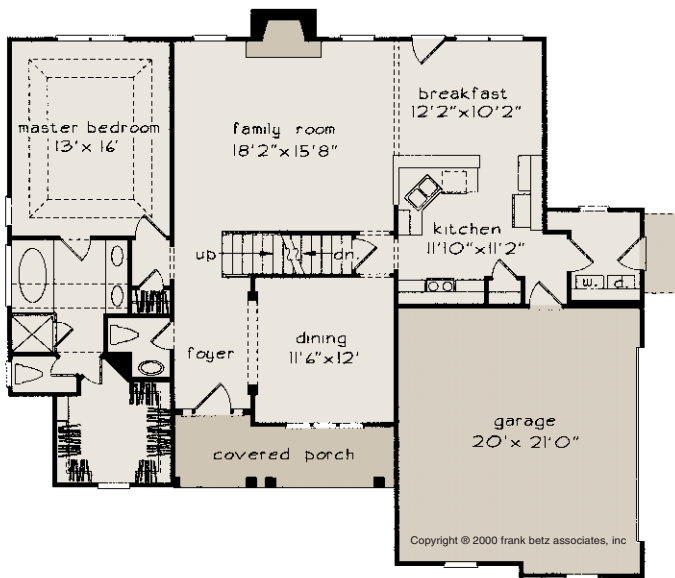
BASTIAN HOMES



1st Floor	1399 sq.ft.
2nd Floor	576 sq.ft.
Total	1975 sq.ft.
Garage	420 sq.ft.
Opt. Bonus Rm.	221 sq.ft.

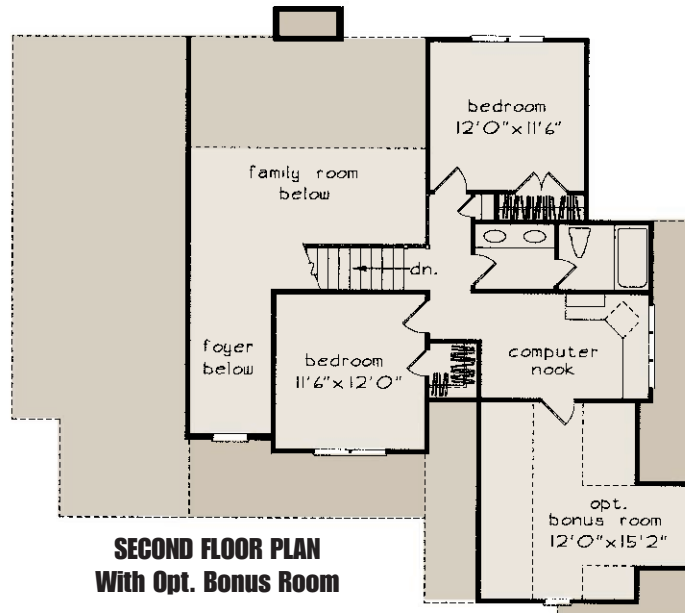
Overall Dimensions
67'-4" x 55'-0"

THE REBECCA FRANKLIN



The Rebecca Franklin Special Features:

- 5' x 18' Covered Front Porch
- 3 Bedrooms
- 2 1/2 Baths
- 1st Floor Laundry
- Computer Nook
- 9-foot First Floor Ceilings
- 2-story Foyer
- 2-story Vault in Family Room
- Tray Ceiling in Master Suite
- Gas Fireplace
- Unfinished Basement Area 1240 Sq. Ft.
- Vinyl Siding Exterior with Partial Stone Front



**SECOND FLOOR PLAN
With Opt. Bonus Room**

Floor plans, standard features, dimensions or any other information in this brochure is subject to change at the sole discretion of Bastian Homes.

The Masterpiece Series