

**THE
START LIVING
SERIES**

THE SAVOY II

4 Bedroom ■ 2 1/2 Bath ■ 2-Story

2-STORY • SAVOY II

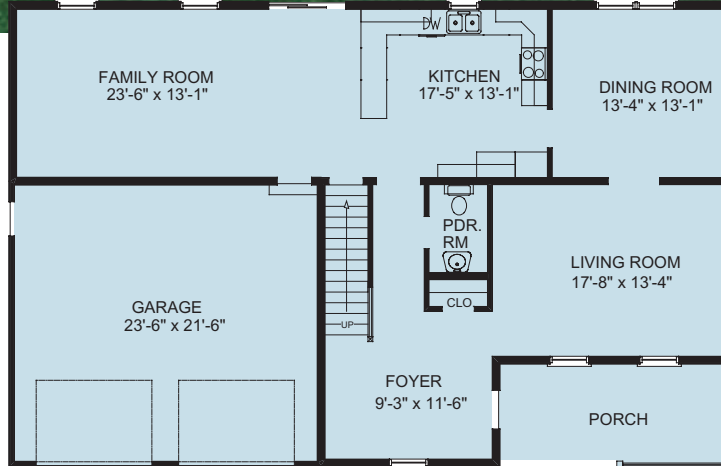
2864 Sq Ft Total

1st Floor 1344 Sq Ft

2nd Floor 1520 Sq Ft

2-Car Garage 505 Sq Ft

- 4 Bedrooms
- 2 1/2 Baths, Soaking Tub and Separate Shower in Master Bath
- 1008 Sq Ft Additional Unfinished Basement Area
- 8'x 18' Front Portico with Vinyl Post and Railing
- 2" x 6" Exterior Walls



SAVOY II
56'-0" x 36'-0"
1344 SQ. FT.

Copyright © 2004 Bastian Homes



SAVOY II
48'-0" x 36'-0"
1520 SQ. FT.

