

**THE
START LIVING
SERIES**

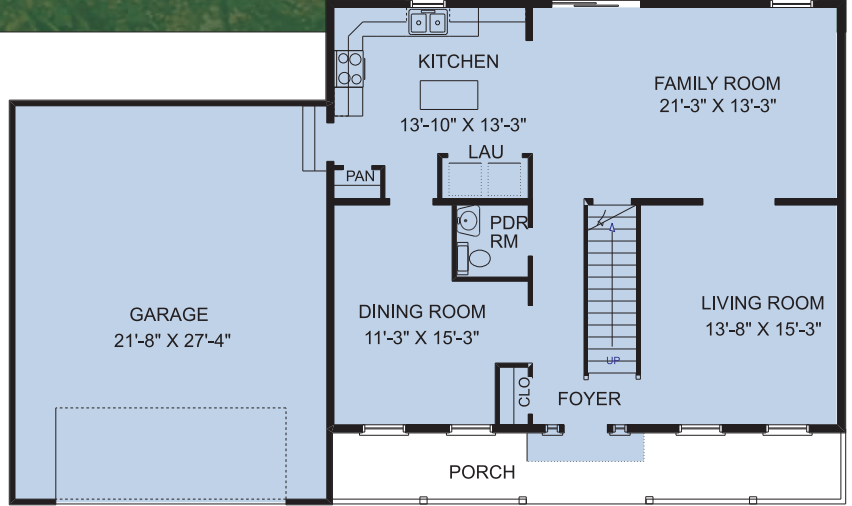
THE STRATFORD II B

4 Bedrooms ■ 2 ½ Baths ■ 2-Story

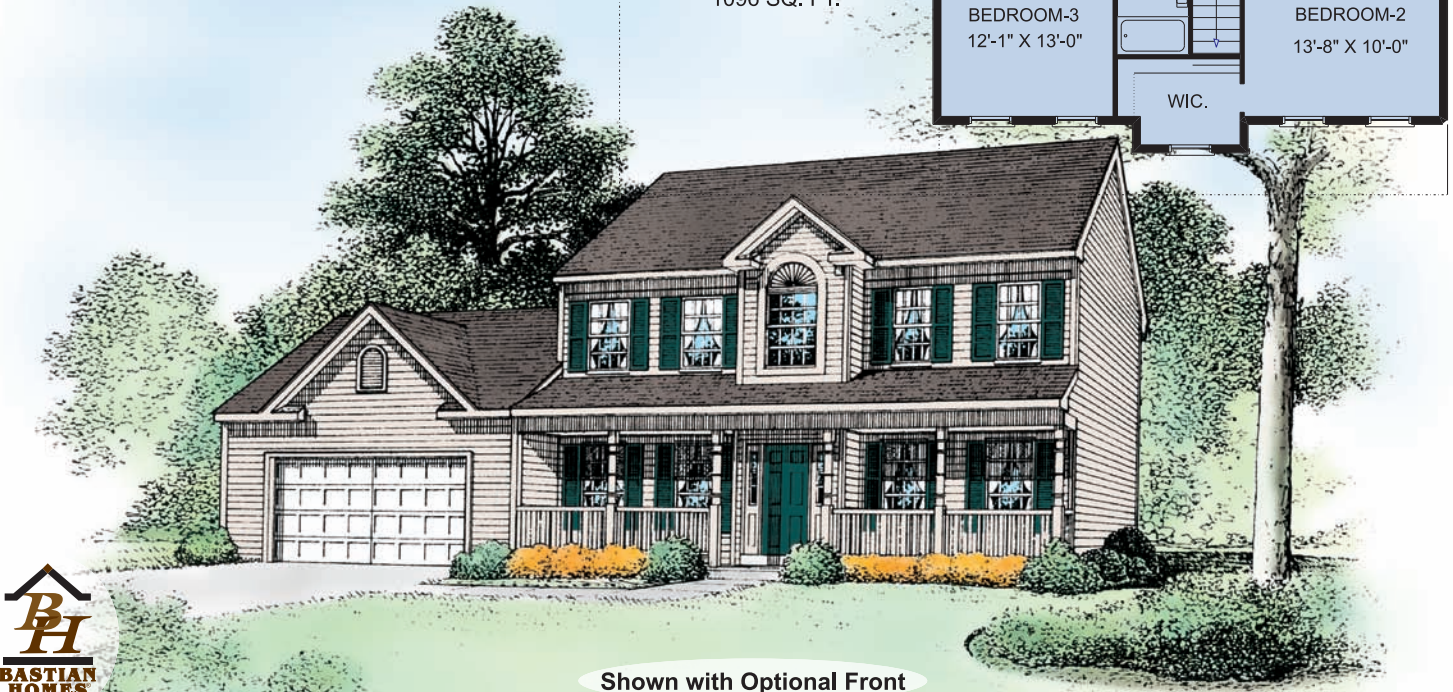
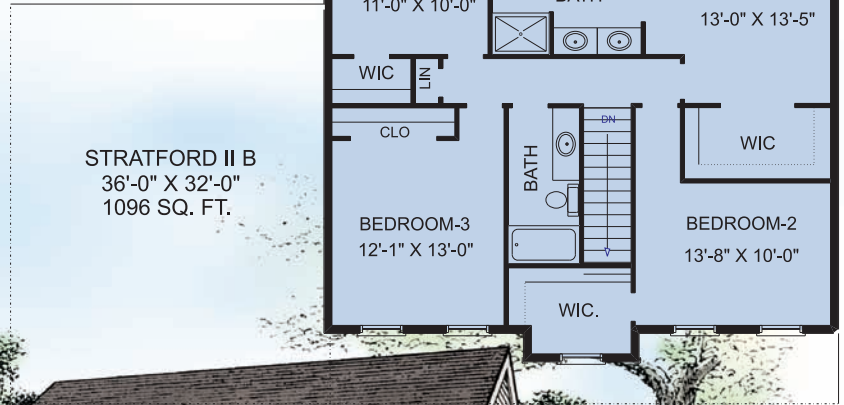
2-STORY • STRATFORD II B

2176 Sq Ft Total
1st Floor 1080 Sq Ft
2nd Floor 1096 Sq Ft
2-Car Garage 616 Sq Ft

- 4 Bedrooms
- 2 ½ Baths
- Master Bath w/soaking tub
- 5' x 36' Front Porch
- L-Shaped Kitchen w/Island
- 1st Floor Laundry
- Unfinished Basement 1080 Sq Ft
- 2" x 6" Exterior Walls



Copyright © 2006 Bastian Homes



Shown with Optional Front



Floor plans, standard features, dimensions or any other information in this brochure is subject to change at the sole discretion of Bastian Homes